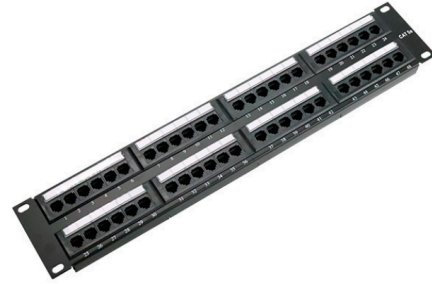


48 Port CAT5e UTP PATCH PANEL

CAT5e UTP 48 Port Patch Panel from Ningbo Puxin exceeds TIA and ISO component specifications, supporting network convergence protocols, delivering maximum bandwidth and extended reliability for all LAN, multimedia, and Power over Ethernet applications.

All performance parameters, including NEXT, FEXT Attenuation and Return Loss are designed to meet the Cabling standard. The patch panel comes with mini cable ties, cage nuts as standard, rear cable management bar optional.



COMPLIANCE

ISO/IEC-11801;ANSI/TIA-568-C.2; EN50173-1 ;
ANSI/TIA – 1096-A (FCC Part68);IEC 60603-7

DESIGN & MATERIALS

Panel Type	Punch Down RJ45
Category	CAT5e
Panel Width	483 mm (19")
Panel Height	2U: 88.4 mm
Panel Material	SPCC, 1.5mm thick painted black
RJ45 Contact Material	Phosphor bronze plated with nickel; surface golden plating
IDC	Tin-plated phosphor bronze
Module Material	High Impact, Flame-Retardant Plastic Compound, UL 94 V-0
Wiring Standards	EIA/TIA 568 A/B
Color	Black

ELECTRICAL CHARACTERISTICS

Insulation Resistance	500m minimum
Contact Resistance	20m max
Dielectric strength	DC 1000V(AC700V)
Working life	750 times Min for RJ45 jack; 200times min for IDC